

EAGLE

SERIES

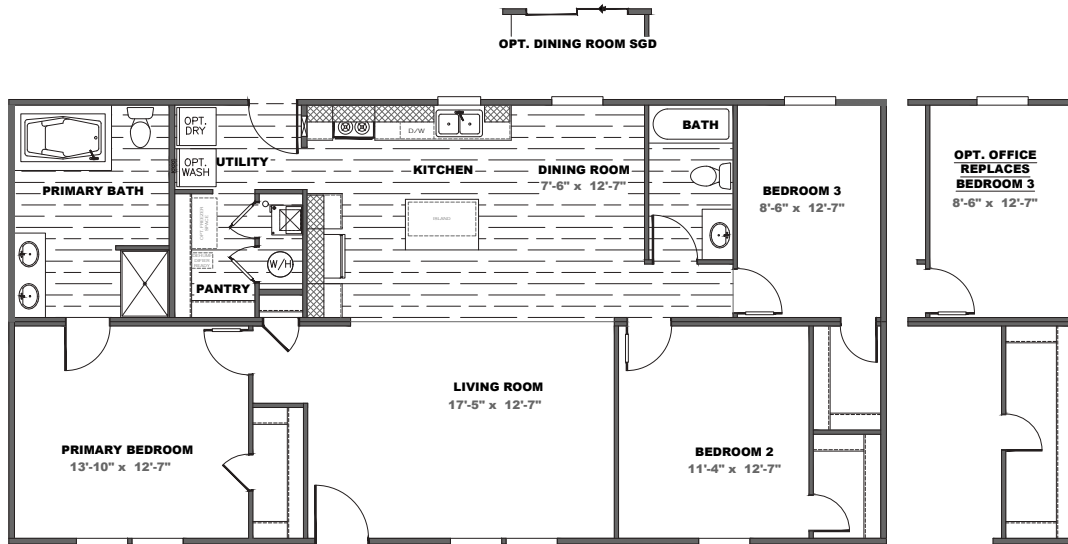
Clayton
appalachia

myappalachiahome.com

THE EAGLE 52



3/4 beds | 2 baths | 1,369 sq. ft. | 28x52



POPULAR STANDARD FEATURES

- 8' Flat Ceilings
- 30" Overhead DuraCraft Cabinets
- Picture Frame Cabinet Doors (w/ Hidden Hinges)
- Kitchen Island w/ Overhang
- Glamour Bath w/ Montrose Fiberglass Tub
- 6 Panel Steel Front Door
- Cottage Rear Door w/ 9 Light Window
- Low E Argon Gas Insulated Windows
- ecobee Smart Thermostat
- Exterior GFI Recept
- Double Marriage Wall Construction
- 5.2lb. Rebond Pad
- Dishwasher
- Smooth Top Range
- Walk-In Pantry
- 25 oz. R2X Stain Resistant Carpet

AVAILABLE OPTIONS

- OSB Wrap
 - Dormer
 - Sliding Glass Door (Model Specific)
 - 2x6 Sidewalls with R-21 Insulation
 - Recessed Frame
 - Front Storm Door (Ship Loose)
 - Wind Zone II w/OSB
 - Wind Zone III w/OSB
 - 2" Mini Blinds
 - Side by Side Refrigerator
 - Ice maker
 - Gas Range
 - Gas Furnace
 - 50 Gallon Hybrid Heat Pump Water Heater
 - Exterior GFI (Front)
 - Exterior Faucet (Front/Rear)
 - Water Cut Offs
 - Elongated Commodes
 - Omit Tub (Primary Bath)
 - Ceramic Sinks
 - Fiberglass Tub/ Showers
 - Energy Star Ceiling Fans
 - Wire and Brace
 - Optional Office (Where Applicable)
 - Wire Shelving in Utility Room
- SHUTTERS**
- _____
- SIDING**
- _____
- DECOR PACKAGES**
- Brown
 - White
 - Grey
- ADDITIONAL VINYL FLOORING**
- Throughout
 - Living Room
 - Primary Bedroom
 - Secondary Bedrooms: #s _____

Clayton Built

Customer Name _____ Customer County/State _____

Customer Email _____ Customer Signature _____